



File Creat Date:17/11/01 19:49:07

# GSP-6 Data Report

## Device Information

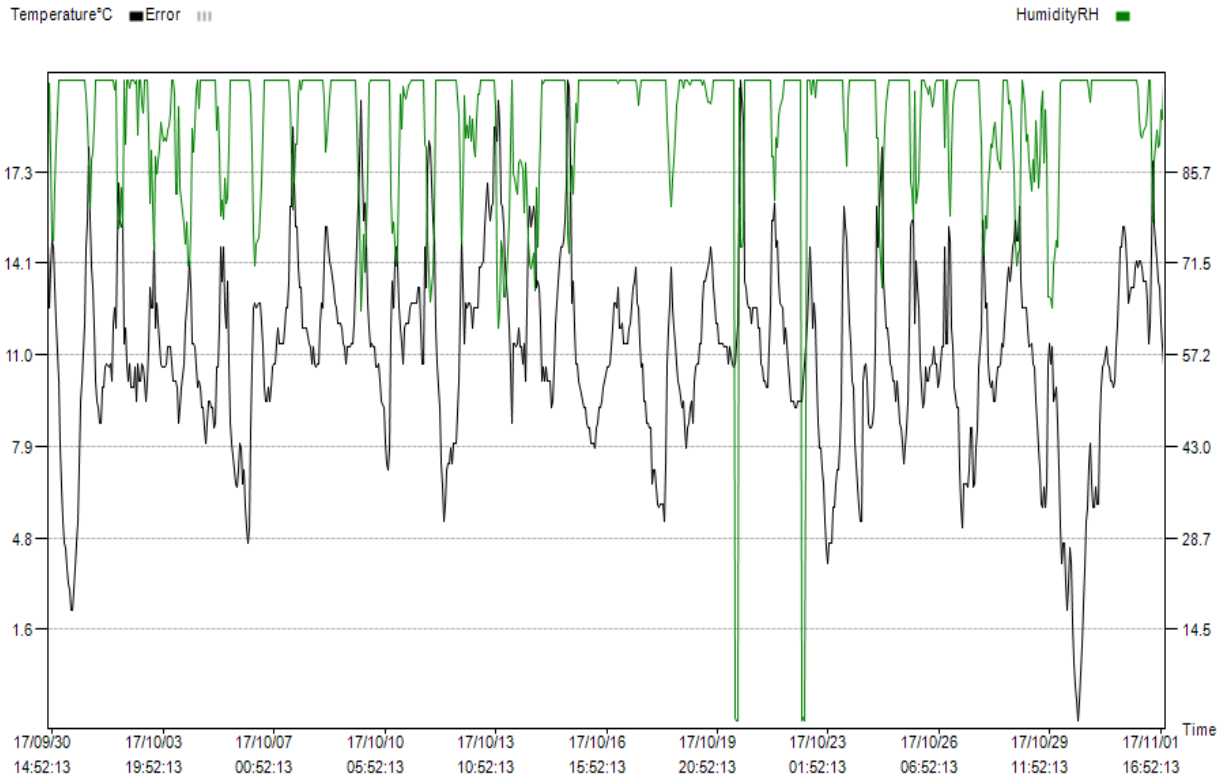
Log Interval: 1H 0M 0S	Start Delay: 0.0	Start Time: 17/09/30 11:52:13
Total Space: 16000	Stop Allow: Enable	Expected Stop Time: 19/07/29 02:52:13
Temperature Type:°C	Alarm Setting: Disable	Actual Stop Time: 17/11/01 19:52:13
Voice Set:Disable	Record Mode: Max	GSP: Disable

## Trip Information

Serial Number: 004  
 Userinfo: GSP-6 temperature & humidity Data Logger

## Logging Summary

Upper Limit: 60.0°C	Upper Limit: 90.0%RH	Recorded Count: 777
Lower Limit: -30.0°C	Lower Limit: 10.0%RH	First time: 17/09/30 11:52:13
Highest: 20.4°C	Highest: 100.0%RH	Last time: 17/11/01 19:52:13
Lowest: -1.5°C	Lowest: 0.2%RH	
Average: 11.0°C	Average: 93.8%RH	





Time	°C	RH	Time	°C	RH	Time	°C	RH	Time	°C	RH	Time	°C	RH
11:52:13	15.6	82.8	15:52:13	9.9	74.9									
12:52:13	15.6	78.3	16:52:13	8.7	74									
13:52:13	12.1	98.3	17:52:13	7.1	86.1									
14:52:13	14.2	80.9	18:52:13	5.1	99.4									
15:52:13	13.3	82.3	19:52:13	3.9	100									
16:52:13	12.6	84.8	20:52:13	4.6	100									
17:52:13	10.7	92.9	21:52:13	4.6	100									
18:52:13	9.9	100	22:52:13	3.2	100									
19:52:13	9.2	100	23:52:13	2.3	100									
20:52:13	9.4	100	17/10/30	3.2	100									
21:52:13	10.6	98.9	01:52:13	4.4	100									
22:52:13	10.1	98.8	02:52:13	3.9	100									
23:52:13	10.1	97.9	03:52:13	1.8	100									
17/10/26	10.6	98.9	04:52:13	0.5	100									
01:52:13	10.7	95.9	05:52:13	-0.3	100									
02:52:13	11.3	97	06:52:13	-0.8	100									
03:52:13	10.7	99.4	07:52:13	-1.5	100									
04:52:13	10.7	100	08:52:13	-0.8	100									
05:52:13	9.9	100	09:52:13	1.1	100									
06:52:13	10.1	100	10:52:13	2.5	100									
07:52:13	10.7	100	11:52:13	3.7	100									
08:52:13	11.3	100	12:52:13	5.3	99.9									
09:52:13	11.3	100	13:52:13	5.8	100									
10:52:13	14.7	89.6	14:52:13	7.3	98.3									
11:52:13	11.4	100	15:52:13	8	96.5									
12:52:13	11.4	100	16:52:13	6.6	100									
13:52:13	15.4	85.3	17:52:13	5.8	100									
14:52:13	14.9	78.9	18:52:13	5.8	100									
15:52:13	11.9	88.5	19:52:13	6.5	100									
16:52:13	11.3	95.9	20:52:13	5.9	100									
17:52:13	9.9	98.3	21:52:13	5.9	100									
18:52:13	9.2	100	22:52:13	8.7	100									
19:52:13	9.2	100	23:52:13	9.9	100									
20:52:13	7.1	100	17/10/31	10.6	100									
21:52:13	5.8	100	01:52:13	10.7	100									
22:52:13	5.1	100	02:52:13	11.3	100									
23:52:13	6.6	100	03:52:13	10.7	100									
17/10/27	6.6	100	04:52:13	10.6	100									
01:52:13	6.6	100	05:52:13	10.1	100									
02:52:13	6.5	100	06:52:13	10.1	100									
03:52:13	7.1	100	07:52:13	9.9	100									
04:52:13	8.5	100	08:52:13	10.1	100									
05:52:13	8.5	100	09:52:13	11.3	100									
06:52:13	6.5	100	10:52:13	12.1	100									
07:52:13	6.6	100	11:52:13	13.3	100									
08:52:13	7.8	100	12:52:13	14.7	100									
09:52:13	8.5	100	13:52:13	14.7	100									
10:52:13	10.6	100	14:52:13	15.4	100									
11:52:13	11.9	90	15:52:13	15.4	99.9									
12:52:13	15.6	72.9	16:52:13	14.9	100									
13:52:13	14.2	73.9	17:52:13	14	100									
14:52:13	12.6	78.8	18:52:13	12.8	100									
15:52:13	12.8	77	19:52:13	13.3	100									
16:52:13	10.7	83.8	20:52:13	13.3	100									
17:52:13	10.1	86.6	21:52:13	13.3	100									
18:52:13	9.9	90.1	22:52:13	14	100									
19:52:13	10.1	89.5	23:52:13	14.2	100									
20:52:13	9.4	92.5	17/11/01	14	98.8									
21:52:13	9.4	93.4	01:52:13	14.2	93.9									
22:52:13	10.1	90	02:52:13	14.2	91.6									
23:52:13	10.6	87.7	03:52:13	14	91.1									
17/10/28	10.6	87.2	04:52:13	13.5	92									
01:52:13	10.7	86.2	05:52:13	13.5	92.5									
02:52:13	11.4	92.9	06:52:13	13.5	92.9									
03:52:13	11.3	100	07:52:13	12.8	95.5									
04:52:13	12.1	100	08:52:13	11.4	100									
05:52:13	13.5	100	09:52:13	12.1	100									
06:52:13	14	96.4	10:52:13	14.7	89.2									
07:52:13	13.5	96.8	11:52:13	17.6	77.8									
08:52:13	14	94.9	12:52:13	15.4	87.6									
09:52:13	14.7	90.5	13:52:13	14.2	92.1									
10:52:13	14.9	85.6	14:52:13	13.5	89.6									
11:52:13	15.6	74.5	15:52:13	13.3	90									
12:52:13	14.9	71	16:52:13	12.1	95.4									
13:52:13	14.9	73	17:52:13	11.3	94									
14:52:13	16.1	73.4	18:52:13	10.6	100									
15:52:13	13.5	91	19:52:13	9.4	100									
16:52:13	12.6	100												
17:52:13	12.6	98.3												
18:52:13	12.6	95.9												
19:52:13	12.6	90.6												
20:52:13	11.9	91.5												
21:52:13	11.3	87.2												
22:52:13	11.4	82.8												
23:52:13	10.7	87.7												
17/10/29	10.6	84.3												
01:52:13	9.4	93.6												
02:52:13	8.7	88.5												
03:52:13	7.8	83.2												
04:52:13	7.1	87.1												
05:52:13	5.9	95.9												
06:52:13	5.8	98.3												
07:52:13	6.5	87.2												
08:52:13	5.8	95.4												
09:52:13	6.6	87.6												
10:52:13	10.7	66.2												
11:52:13	11.4	66.2												
12:52:13	10.7	66.1												
13:52:13	11.3	64.6												
14:52:13	9.4	71.1												