



File Creat Date:17/09/30 11:49:43

GSP-6 Data Report

Device Information

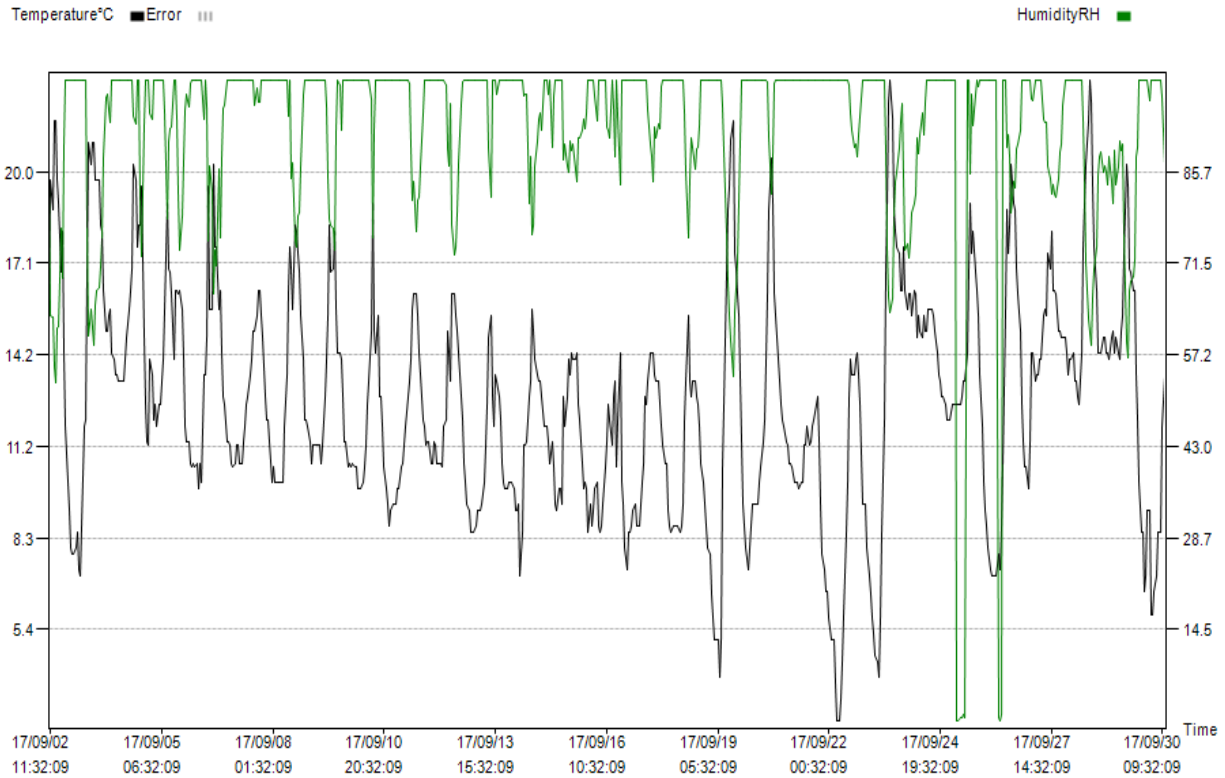
Log Interval: 1H 0M 0S	Start Delay: 0.0	Start Time: 17/09/02 10:32:09
Total Space: 16000	Stop Allow: Enable	Expected Stop Time: 19/07/01 01:32:09
Temperature Type:°C	Alarm Setting: Disable	Actual Stop Time: 17/09/30 11:32:09
Voice Set:Disable	Record Mode: Max	GSP: Disable

Trip Information

Serial Number: 004
 Userinfo: GSP-6 temperature & humidity Data Logger

Logging Summary

Upper Limit: 60.0°C	Upper Limit: 90.0%RH	Recorded Count: 674
Lower Limit: -30.0°C	Lower Limit: 10.0%RH	First time: 17/09/02 10:32:09
Highest: 22.9°C	Highest: 100.0%RH	Last time: 17/09/30 11:32:09
Lowest: 2.5°C	Lowest: 0.2%RH	
Average: 12.6°C	Average: 92.4%RH	



Time	°C	RH	Time	°C	RH	Time	°C	RH	Time	°C	RH	Time	°C	RH
10:32:09	15.6	93.4												
11:32:09	15.4	93.4												
12:32:09	17.4	86.6												
13:32:09	16.9	84.6												
14:32:09	18.1	82.2												
15:32:09	16.2	83.7												
16:32:09	16.2	82.2												
17:32:09	16.1	81.8												
18:32:09	14.9	84.6												
19:32:09	14.9	88.7												
20:32:09	14.7	90												
21:32:09	14.7	96												
22:32:09	14.7	100												
23:32:09	14.2	100												
17/09/28	13.5	100												
01:32:09	14	100												
02:32:09	14	100												
03:32:09	14.2	100												
04:32:09	13.3	100												
05:32:09	13.3	100												
06:32:09	12.8	100												
07:32:09	12.6	100												
08:32:09	14.2	100												
09:32:09	17.6	93.6												
10:32:09	19	84.2												
11:32:09	20.2	71.6												
12:32:09	21.6	62.8												
13:32:09	22.9	60.7												
14:32:09	22.2	58.8												
15:32:09	19.5	66.2												
16:32:09	17.6	70.6												
17:32:09	16.2	74												
18:32:09	14.2	85.1												
19:32:09	14.2	88.2												
20:32:09	14.2	88.7												
21:32:09	14.7	85.7												
22:32:09	14.7	86.6												
23:32:09	14.2	85.6												
17/09/29	14.2	83.8												
01:32:09	14	88.2												
02:32:09	14.7	84.2												
03:32:09	14.9	80.9												
04:32:09	14.2	89												
05:32:09	14.7	83.7												
06:32:09	14.2	86.7												
07:32:09	14	90.6												
08:32:09	14.9	89												
09:32:09	15.4	90												
10:32:09	17.4	75.9												
11:32:09	20.2	59.2												
12:32:09	19.5	56.8												
13:32:09	16.9	67.2												
14:32:09	16.8	68.6												
15:32:09	16.2	69.5												
16:32:09	16.2	72.1												
17:32:09	13.5	88.2												
18:32:09	12.1	89.5												
19:32:09	10.1	100												
20:32:09	8.5	100												
21:32:09	8.5	100												
22:32:09	6.6	100												
23:32:09	7.1	100												
17/09/30	9.2	100												
01:32:09	9.2	96.8												
02:32:09	5.9	100												
03:32:09	5.9	100												
04:32:09	6.6	100												
05:32:09	7.1	100												
06:32:09	8.5	100												
07:32:09	8.5	100												
08:32:09	8.5	100												
09:32:09	11.9	97.3												
10:32:09	13.5	86.7												
11:32:09	14.2	87.2												